

# GIASCO

SAFETY SHOES



**FUTURE IS UNDER YOUR FEET**

**KATALOG**  
2023-2024

**R•A•M**



# MANAGEMENT SYSTEM CERTIFICATE

DNV-GL



PROIZVODNJA



TEHNOLOGIJA



**CERTIFIKATI**

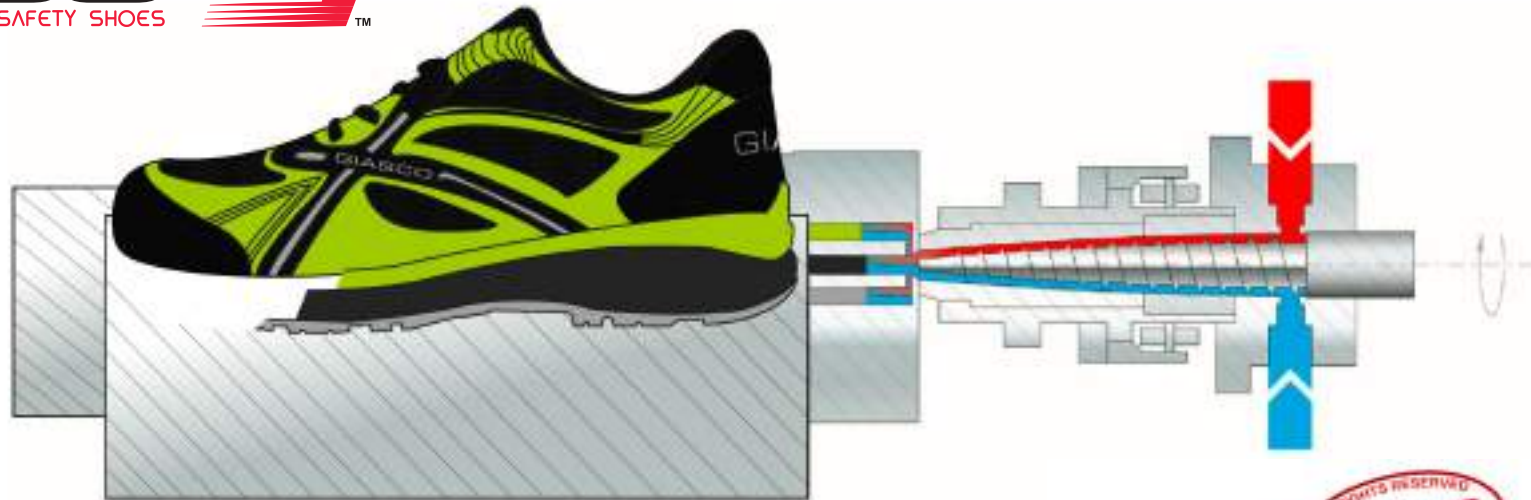


**BRZA ISPORUKA**



**DIZAJN**







## THE FIRST SHOE WITH **3** PU *DENSITIES* INJECTED





TECHNOLOGY


**3PU INJECTION SEQUENCES**


 3D je patentirana revolucionarna tehnologija koja nam omogućuje da ponudimo jedinu cipelu s 3 različita sloja poliuretana ubrizganih na gornji dio. Cilj ovog proizvoda je ponuditi sigurnost, maksimalnu udobnost i stabilnost stopala zahvaljujući 3 gustoće koje karakteriziraju različite slojeve potplata.

 3D is a patented revolutionary technology that allows us to offer the only shoe with 3 different layers of polyurethane injected on the upper. The aim of this product is to offer Safety, maximum UDOBNOST and Secure foot STABILNOST thanks to the 3 densities that characterize the various layers of the sole.

 3D es una tecnología revolucionaria patentada que nos permite ofrecer el único zapato con 3 niveles diferentes de poliuretano inyectados en el corte. El objetivo de este producto es ofrecer seguridad, el máximo confort y una estabilidad segura del pie gracias a las tres densidades que caracterizan las distintas capas de la suela.

 3D è una tecnologia rivoluzionaria brevettata che permette di offrire l'unica calzatura con 3 diversi strati di poliuretano iniettati su tomaia. Obiettivo di questo prodotto è quello di offrire Sicurezza, il massimo UDOBNOST e una sicura Stabilità del piede grazie alle 3 densità che caratterizzano i vari strati della suola.

 3D est une technologie révolutionnaire brevetée qui nous permet d'offrir la première chaussure avec 3 couches différentes de polyuréthane injecté sur la tige. Le but de ce produit c'est d'offrir sécurité, un confort optimal et de garantir la stabilité du pied grâce aux 3 densités qui caractérisent les différentes couches de la semelle.

 3D ist eine revolutionäre und patentierte Technologie, die es gestattet einen einzigartigen Schuh mit drei verschiedenen Schichten aus in das Oberleder injiziertem Polyurethan anzubieten. Das Ziel dieses Produkts ist es, dem Fuß dank der drei unterschiedlichen Dichten der verschiedenen Schichten der Sohle einen maximalen Komfort sowie eine sichere Stabilität zu bieten.

# ***3*BULTRA**

***TRIPLE YOUR  
RESISTANCE***



# ***3*CROSS**

***TRIPLE YOUR  
STABILITY***



# ***3*BULTRA RUBBER**

***TRIPLE YOUR  
RESISTANCE***



# ***3*HYBRID**

***TRIPLE YOUR  
COMFORT***



# ***3*RUN**

***TRIPLE YOUR  
STYLE***



# ***3*MOVE**

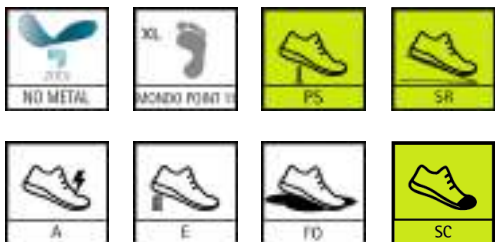
***TRIPLE YOUR  
MOBILITY***





3PU PATENT

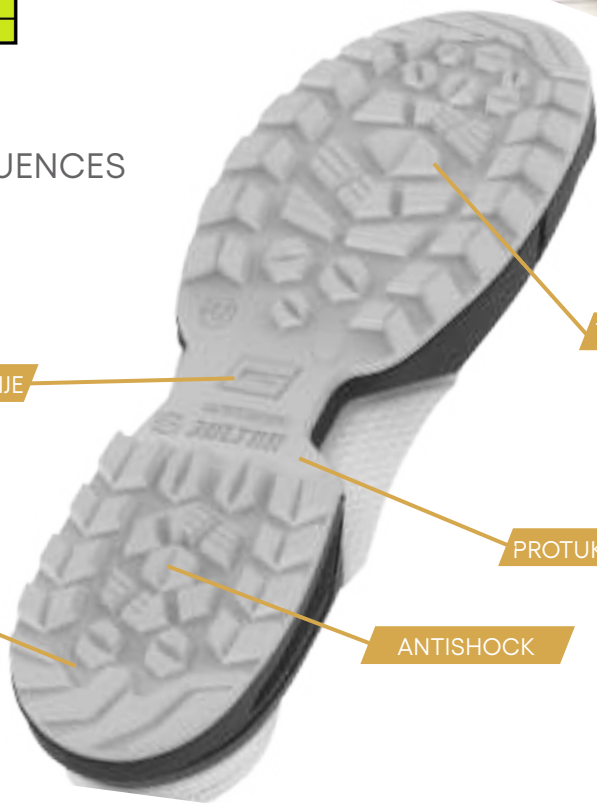
# BULTRA



TECHNOLOGY  
3PU INJECTION SEQUENCES



PROTIV VIBRACIJA



UMETAK PROTIV TORZIJE

TOČKA SAVIJANJA

NAGNUTA PETA  
ZA LAKŠE HODANJE

PROTUKLIZNI POTPLAT

ANTISHOCK





**NEW**

OPAL S1PS FO SC SR 3U434N  
37-49



**NEW**

SILVER S7S FO CI SC SR 3U451L  
37-49



**NEW**

GOLD S7S FO CI SC SR 3U458L  
37-49



**NEW**

ZIRCON S3S FO SC SR 3U481D  
37-49



**NEW**

TOPAZ S3S FO SC SR 3U488D  
37-49



**NEW**

QUARTZ S3S FO CI SC SR 3U017G  
39-47



# BULTRA RUBBER



UMETAK PROTIV TORZIJE

TOČKA SAVIJANJA

NAGNUTA PETA  
ZA LAKŠE HODANJE

PROTUKLIZNI POTPLAT

ANTISHOCK







**NEW**

LOBBIA S7S FO CI HI HRO SC SR 3RUB451L  
38-49



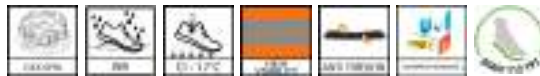
**NEW**

TRIGLAV S7S FO CI HI HRO SC SR 3RUB458L  
38-49



**NEW**

AROLLA S7S FO CI HI HRO SC SR 3RUB459L  
38-49



**NEW**

MARMOLADA S7S FO CI HI HRO SC SR 3RUB179E  
38-47





**3PU PATENT**

# 3MOVE



**SRC**  
ANTI-SLIPPING SOLE

*extra  
LIGHT  
shoes*



**TECHNOLOGY**  
3PU INJECTION SEQUENCES



**PATENTIRANI**  
dizajn potplata.



UMETAK PROTIV TORZIJE

NAGNUTA PETA  
ZA LAKŠE HODANJE

TOČKA SAVIJANJA

PROTUKLIZNI POTPLAT

ANTISHOCK



UDOBNOST

STABILNOST

PROTUKLIZNOST



**FOX S3** 3M453N  
36-47



**TIGER S3** 3M457N  
36-47



**LION S3** 3M184K  
36-47



**CHEETAH S1P** 3M184Y  
39-47



**3PU PATENT**

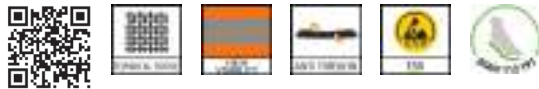
**PATENTIRANI**  
dizajn potplata



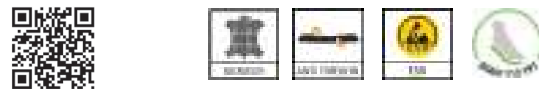
**3MOVE**



LEOPARD S1P 3M454T  
36-47



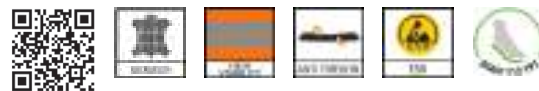
SHARK S1P 3M450N  
36-47



MAKO S1P 3M182T  
36-47



FALCON S3 3M474NA  
36-47



**3PU PATENT**

**PATENTIRANI**  
dizajn potplate



**3MOVE**



**3PU PATENT**

# 3HYBRID



**SRC**  
ANTI-SLIPPING SOLE

*extra  
LIGHT  
shoes*



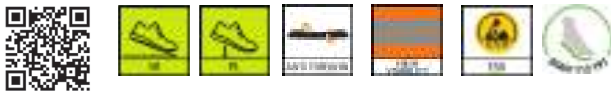
**TECHNOLOGY**  
3PU INJECTION SEQUENCES





PAG S3L FO SR  
36-47

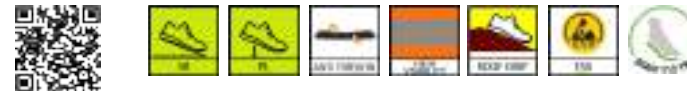
3H063N



**NEW**

KRK S3L FO SR  
36-47

3H149N



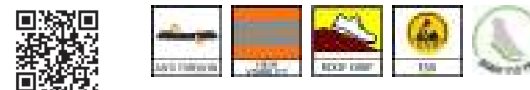
FIJI S3  
39-47

3H142EV



BALI S3  
36-47

3H149EV





LAS VEGAS S1P 3H154EC  
36-47



IBIZA S3L FO SR 3H154NK  
36-47



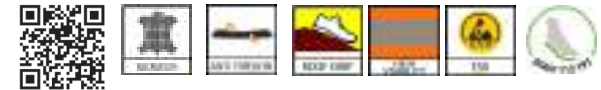
LIPARI S1PL FO SR 3H182NG  
36-47



PONZA S3L FO SR 3H025NG  
36-47



BORNEO S3 3H037NG  
36-47





ARUBA S3  
36-47

3H192EV



MYKONOS S1P  
36-47

3H192ER



BURGAZ S1P  
36-47

3H184J



GOTLAND S1P  
39-47

3H224EJ







**SYLT S1P**  
39-47

3H432Y



**SAMOA S1P**  
36-47

3H085N



**FUERTEVENTURA S1P**  
36-47

3H433N



**PANAREA S1P**  
36-47

3H174V





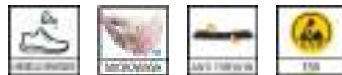
USTICA S2  
36-47

3H0021



CORFU S2  
36-47

3H0020



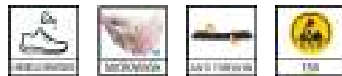
MAUI S3  
36-47

3H1911



ZANTE S1P  
36-47

3H0951



MINORCA S2  
36-47

3H0201



### CRNI MICROWASH

Laboratorijska ispitivanja za određivanje kemijske rezistencije (natrijev hidroksid 40% K) gornjeg materijala u skladu s analognom metodom **EN 13832-3:2018**.

### BIJELI MICROWASH

Laboratorijska ispitivanja za određivanje kemijske rezistencije (N, P, R, K, NaCl 37%\*) gornjeg materijala u skladu s analognom metodom EN 13832-3:2018.



Laboratorijska ispitivanja za određivanje kemijske rezistencije (N, P, R, K, NaCl 370/o) materijala **POTPLATA** u skladu s analognom metodom **EN 13832-3:2018**.

- KUBE/ERGO crna;
- KUBE bijeli;
- 3CROSS/3RUN narančasta;
- 3HYBRIO/ERGO svijetlo siva

\* K - natrijev hidroksid 40%; N - octena kiselina 99%; P - vodikov peroksid 30%; R - natrijev hipoklorit (13 ± 1) % aktivnog klora; NaCl 37% - natrijev klorid 37%;

KEMIJSKE REZISTENCije



3PU PATENT

# 3CROSS



NO METAL



NACIKO POKRIJE TI



A



E



FD

**SRC**  
ANTI-SLIPPING SOLE

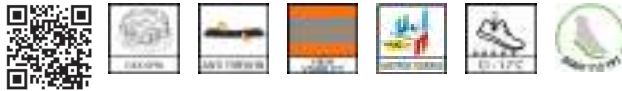


**TECHNOLOGY**  
3PU INJECTION SEQUENCES





STELVIO S3 CI 3C224N  
39-47

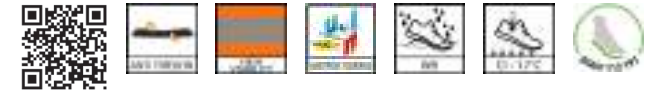


**NEW**

CERVINO S3L FO SR 3C184G  
39-47



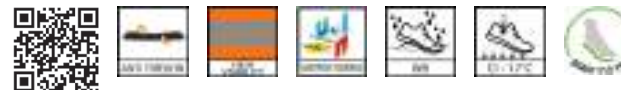
MAKALU S3 CI WR 3C058G  
38-47



K2 S3 CI 3C149E  
39-47



HIMALAYA S3 CI WR 3C178E  
39-47





ANETO S3

3C1910



TRIVOR S3

3C1980



THOMSON SB FO E P CI WRU

3C060D



SINAI S1P

3C182T



KAMET S3 CI

3C122D





3PU PATENT

# BRUN



NO METAL



NAGNUO POKRAT II



A



E



FD

**SRC**  
ANTI-SLIPPING SOLE

*extra  
LIGHT  
shoes*



**TECHNOLOGY**  
3PU INJECTION SEQUENCES





**BERG S3**  
39-47

3R171R



**JARBO S3**  
36-47

3R453N



**OSTRO S3**  
36-47

3R457N



**OROSHI S1P**  
36-47

3R172T



**FLOW SB FO E P CI WRU**  
36-47

3R022E



**LIGHT SB FO E P CI WRU**  
36-47

3R198E



 **ASTM 2413-11**   
 **C.S.A. Z195-14**   
**INSULATING SOLE**  
**FROM >1000 MQ** 

 **ASTM 2413-11**   
 **C.S.A. Z195-14**   
**INSULATING SOLE**  
**FROM >1000 MQ** 



**LIBECCIO S1P**  
36-47

3R085N



**GHIBLI S1P**  
36-47

3R182T



**HURRICANE S3**  
39-47

3R171V



**SHAMAL S3**  
36-47

3R173O



**BURAN S3**  
36-47

3R191O



**CIENZO S3**  
36-47

3R198O





# NAJBOLJA PROTUKLIZNA SVOJSTVA **KUBE**



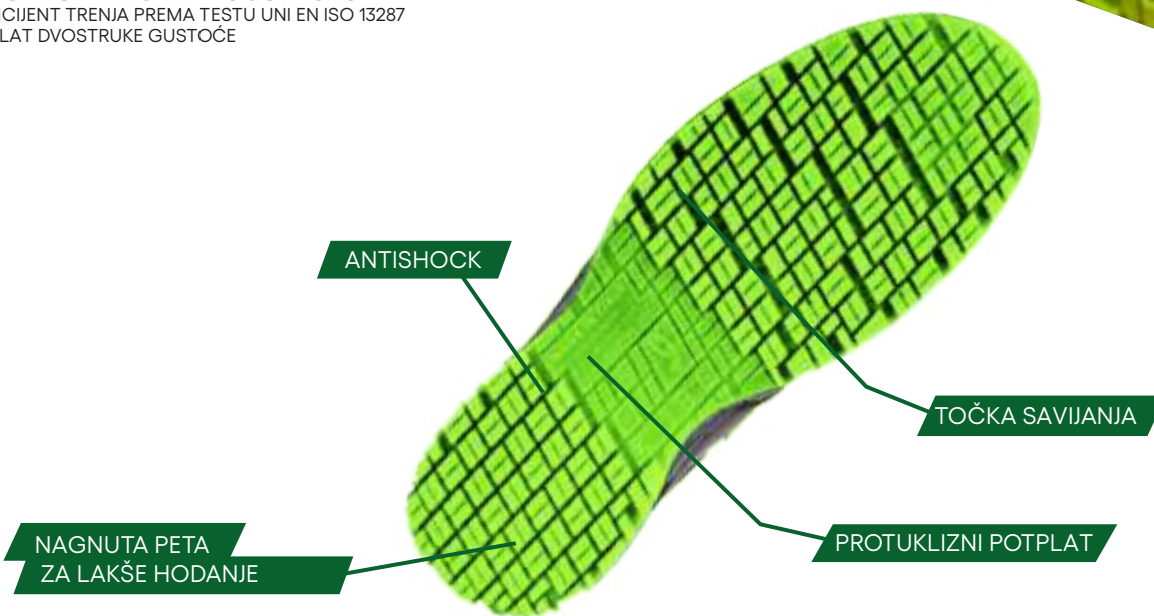
**SRC**  
ANTI-SLIPPING SOLE

**PERFECT GRIP**

*extra*  
**LIGHT**  
*shoes*

## **ROOF GRIP UNI 11583:2015**

KOEFICIJENT TRENJA PREMA TESTU UNI EN ISO 13287  
POTPLAT DVOSTRUKE GUSTOĆE





**GOLF NEW S3**  
39-47



KU142EV



**LIBRA NEW S3**  
36-49



KU149EV



**MIAMI S1P**  
35-47



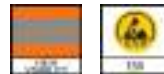
KU093N



**RUGBY S3**  
36-47



KU025N



**BASKET S3**  
36-47



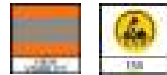
KU037N





**NORDIC S3**  
36-47

KU043N



**PERÙ S1P**  
34-47

KU095T



**BOSTON S3**  
36-47

KU051L



**DANCE S1P**  
35-42

*Cady*

KU055HF





PANAMA S1P  
35-49

KU083T



KAYAK S3  
36-47

KU025T



SOFTBALL S3  
39-47

KU037T



VOLARE S3  
36-47

KU474NA



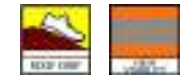
YORK S3  
35-49

KU061D



OXFORD S3  
35-49

KU068D



perfect grip

**KUBE**



MEDINA S2

KU0020



VILNIUS S3

KU0250



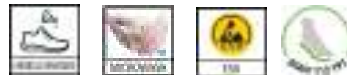
FREE SB FO A E

KU0070



POLO S2

KU0021



STOCKHOLM S3

KU1911



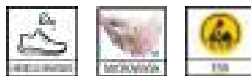
HELSINKI SB FO A E

KU0071



BALTIC S2

KU0201



CONSTANTA S2

KU8801



ICEBERG S2 CI

KU0111



perfect grip

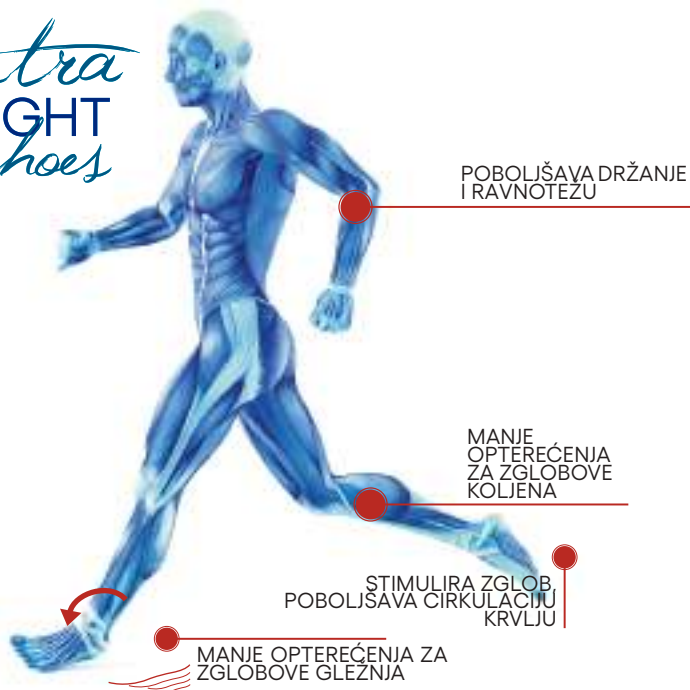
KUBE

ANTISTATIK PU/PU-  
POTPLAT DVOSTRUKE GUSTOĆE  
**ERGO SAFE**



**SRC**  
ANTI-SLIPPING SOLE

*extra*  
**LIGHT**  
*shoes*





SANTA FE S1P

36-47



71T83C



SOCCER S3

36-47



ER025T



VOLLEYBALL S3

39-47



ER037T



HAITI S1P

36-47



71N93C



SPORT S3

36-47



73N25C

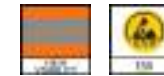


GYM S3

36-47



73N37C



LIMA S1P

36-47



71T95C

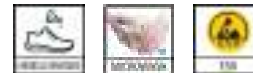


ARENDA S2

36-47



72O02

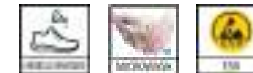


BERGEN S2

36-47

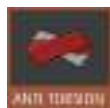


72I02



# ANTISTATIK PU/PU- POTPLAT DVOSTRUKE GUSTOĆE **STABILE**

ODLIČNO PRIJANJANJE



**SRC**  
ANTI-SLIPPING SOLE



KÖLN S3 CI WR  
39-47

TO058L



DEFENDER S3 CI WR AN  
39-47

TO159D



HANNOVER S3 CI WR  
39-47

TO169N







ALASKA S3 CI WR TO084B  
39-47



BILBAO S3 CI WR TO149G  
39-47



MALAGA S3 TO061D  
39-47



GRANADA S3 TO068D  
39-47



STRAUSS S3 TO880BP  
39-47



DAKOTA S3 CI TO011D  
39-47



TITAN S3 CI TO011G  
39-47



**STABILE**

ANTISTATIK PU/PU-  
POTPLAT DVOSTRUKE GUSTOĆE  
***ACTION***



**SRC**  
ANTI-SLIPPING SOLE



GULF S3  
39-47

AC011A



**BIG SIZE**

KENT S3  
36-51

AC061D



**BIG SIZE**

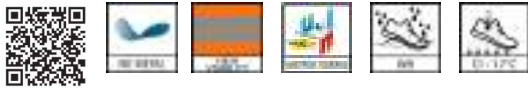
CAMBRIDGE S3  
36-51

AC068D





**HAMBURG S3 CI WR** AC058L  
36-49



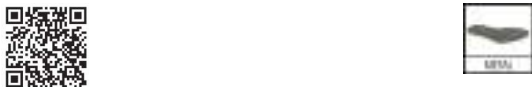
**IRON RM S3** AC068DRM  
37-47



**SOLDADOR S3** AC880BSP  
39-47



**MOZART S3** AC810BP  
36-49



**VERDI S3** AC880BP  
36-49



**VERDI S3 R** AC880BRP  
39-47



# ANTISTATIK PU – GUMENI POTPLAT **HARD ROCK**



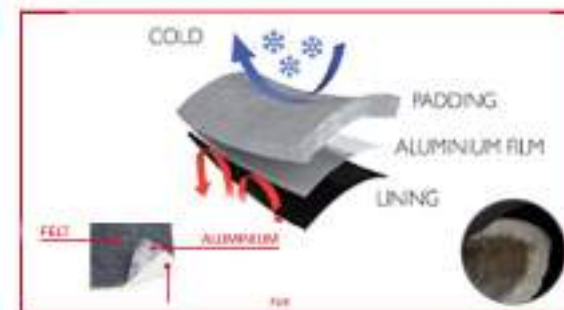
**SRC**  
ANTI-SLIPPING SOLE



TOČKA SAVIJANJA

PROTUKLIZNI POTPLAT

ANTISHOCK



ANTIBAKTERIJSKA TEHNOLOGIJA



CAIRO S3 CI HI HRO  
39-47

HR068D



KIEL S3 CI HI WR HRO  
37-48

HR058L



ALPI S3 CI HI WR HRO  
37-47

HR058G



GENK S3 CI HI HRO  
37-47

HR051L



WELDER S3L FO CI HI HRO SC SR  
39-47

HR122D

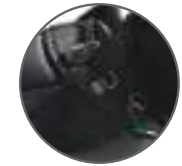


ERCOLANO S3 HI HRO  
39-47

HR066D



**NEW**





**METATARZALNA ZAŠTITA:**  
zaštita do 100 džula

M-PROTECTION S3 CI HI HRO M HR470EMR  
39-47



WOODCUT S3 CI HI WR HRO (80236)  
39-47



WINTER S3 CI HI WR HRO HR011L  
39-47



ARTIC S3 CI HI WR HRO HR179E  
39-47



QUEBEC S3 CI HI WR HRO HR178E  
39-47



**HARD ROCK**  
ANTISTATIK PU – GUMENI POTPLAT



IZOLACIJSKI PU/PU/PU POTPLAT  
IZOLACIJSKI PU/GUMENI POTPLAT

## ***DIELECTRIC SOLE LINE***



### **C.S.A. Z195-14**

DIELEKTRIK LINIJA premašuje zahtjeve Kanadske norme CSA za električni otpor. Određivanje otpornosti za strujni udar na potencijal od **20.000 V** / 60 Hz, u razdoblju od 1 min.



### **ASTM 2413 - 11**

DIELEKTRIK LINIJA premašuje zahtjeve za električnu otpornost (EH) u skladu sa ASTM 2413 - 11 električnom opasnošću - Napon: **20.000 V** / 60 Hz - trajanje: 1 min. zahtjev elektricnog protoka nizi od 1.0 mA.



### **IZOLACIJSKI POTPLAT OD > 1000 MΩ**

Dno cipele, unutar nekih granica (bez vlage, ne tiče se gornjeg dijela), osigurava električnu otpornost na napetost do 1.000V - M Ω > 1.000



**3RUN**



FLOW SB FO E P CI WRU 3R022E  
36-47



**3RUN**



LIGHT SB FO E P CI WRU 3R198E  
36-47



**HARD ROCK**



SAMEL SB FO E P CI HI WRU HRO  
HRD155D  
38-47



**3CROSS**



THOMSON SB FO E P CI WRU  
3C060D  
38-47



**DIELECTRIC SOLE LINE**  
IZOLACIJSKI PU / GUMENI POTPLAT  
IZOLACIJSKI PU / PU/PU POTPLAT





VOLT SB FO E P HRO  
39-47

HRD055H



HERTZ SB FO E P HRO  
39-47

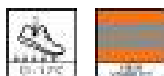
HRD154T



FRANKLIN SB FO E P CI HI WRU HRO  
HRD052T  
37-47



EDISON SB FO E P CI HI WRU HRO  
HRD060D  
37-48



TESLA SB FO E P CI HI WRU WR HRO  
HRD057E  
39-47



**DIELECTRIC SOLE LINE**  
IZOLACIJSKI PU / GUMENI POTPLAT  
IZOLACIJSKI PU / PU/PU POTPLAT

PROFESSIONAL  
**CITY**



NO METAL



RACNO POKRITJE



A



E



FD

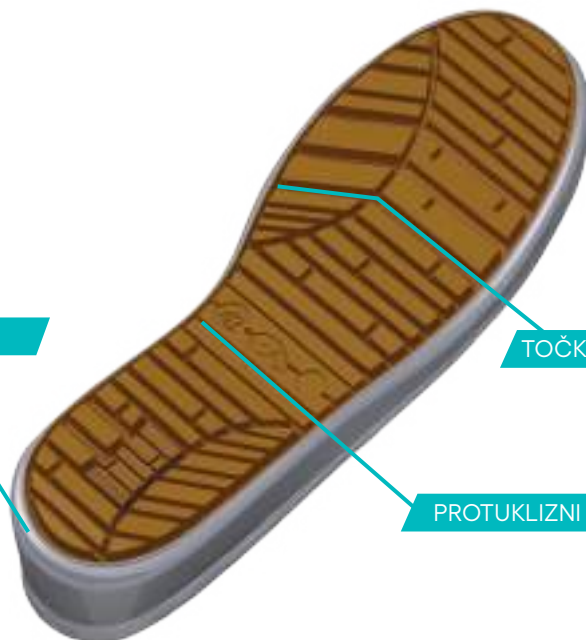
**SRC**  
ANTI-SLIPPING SOLE

SKRIVENA  
TEHNOLOGIJA  
POTPLATA

NAGNUTA PETA  
ZA LAKŠE HODANJE

TOČKA SAVIJANJA

PROTUKLIZNI POTPLAT

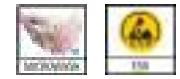




**EAGLE O2 FO** C7004I  
36-47



**SNAKE O2 FO** C7181O  
36-47



**MALMO O2 FO CI** C7025O  
36-47



**LUTON O3 FO** C7068OC  
36-47





**1000**  
36-49



**MEMORY**  
36-47



**4000**  
35-47



**5000**  
34-49



**DIELECTRIC**  
37-47



**GA514-10**  
110 cm



**GA513-10**  
90 cm



**GA509-10**  
CM 67X32X28





SB=

S1=SB+E+A+  
ZATVORENA REGIJA SJEDALA

S1P=SB+E+A+P+FO

S2=S1+WRU

S3=S2+P+  
POTPLAT SA ČEPICIAMA


SB=

S1=SB+E+A  
ZATVORENO PODRUČJE PETE

S1P=SB+E+A+P

S1PL=SB+E+A+PL

S1PS=SB+E+A+PS

S2=S1+WPA

S3=S2+P  
POTPLAT SA ČEPICIAMA

S3L=S2+PL  
POTPLAT SA ČEPICIAMA

S3S=S2+PS  
POTPLAT SA ČEPICIAMA

S6=S2+WR

S7=S3+WR

S7L=S3L+WR

S7S=S3S+WR


UNI EN ISO 20347:2012



OB= osnovni zahtjev

O1=OB+E+A  
ZATVORENA REGIJA SJEDALA

O1P=OB+E+A+P

O2=O1+WRU

O3=O2+P+  
POTPLAT SA ČEPICIAMA




Certificirano Za Rad Na Krovu  
UNI 11583:2015



oznaka UKCA  
United Kingdom



USA STANDARD  
astm 2413-18  
UTJECAJ/KOMPRESIJA

NOVO 20345:2022

20345:2012



Dodatno zaštićena na ugljikovodike kapica    potplata otporan na ugljikovodike kapica    zaštitna kapica (200J)    otpornost na klizanje    otpornost na klizanje keramički pod + deterđent nals (natrijev lauril sulfat)    otpornost na klizanje keramički pod + glicerina    Absorpcija energije na petnom dijelu    Antistatična obuća    Vodonepropusni gornji dio    Vodonepropusna cipela    potplata protiv probijanja    Izolacija od hladnoće potplata    Potplata otporan na vrući kontakt    Toplinska izolacija    metatarzalna zaštita    zaštita zgloba

Za sve informacije prema standardu, pogledajte korisničku podršku s informativnom napomenom



**XSTICKER and XPEN**  
19x15,5 cm



**XDISPLAY**



**XBAG NYLON**  
50x30 cm



**XTOTEM**  
156x57x21 cm



**XBAG SPORT**  
42x34 cm



**XCARPET**  
60x40 cm



**XPOUF**  
35x35x35 cm

**3PU PATENT**

**3ULTRA**

page 6



PRIJANJANJE NA LEDU  
PATENTIRANI  
dizajn polipista

**3ULTRA  
RUBBER**

page 8

**3PU PATENT**



PATENTIRANI  
dizajn polipista

**3MOVE**

page 10

**3PU PATENT**

**3HYBRID**

page 13

**3PU PATENT**

**3CROSS**

page 19

**3PU PATENT**

**3RUN**

page 22

**KUBE**

page 25

**ERGO SAFE**

page 30

**STABILE**

page 32

**ACTION**

page 34

**HARD ROCK**

page 36

**DIELECTRIC LINE**

page 39

**CITY**

page 42

**ACCESSORIES**

page 44

**STANDARDS**

page 45

**ADVERTISING**

page 46

**KATALOG**  
**2023-2024**

**GIASCO**  
SAFETY SHOES



**R•A•M**

Headquarters: Braće Monjač 8, 51000 Rijeka  
Postal and delivery address: Spinčevića 9, 51000 Rijeka, Hrvatska  
E-mail: ram@ram-rijeka.com  
Tel: +385 51 261 075; 684 359; 991 139  
Fax: +385 51 684 389